

A wide-angle photograph of the Toronto skyline at night, viewed from across Lake Ontario. The CN Tower stands prominently on the left, illuminated with red and white lights. To its left is the Rogers Centre, glowing with blue light. The rest of the skyline is a dense collection of skyscrapers, their windows and architectural details lit up with various colors like yellow, white, and red. The lights from the city are reflected in the calm water of the lake in the foreground. The sky is a deep blue with some light clouds.

TORONTO

JAX Chamber Leadership Trip
Waterfront Activation Session
November 2017

Moderator: *CW Lori Boyer, City of Jacksonville*

Panelists: *Christina Heydorn*
Lee Parsons



Northwest Territories

Nunavut

Newfoundland
and Labrador

British
Columbia

Alberta

Saskatchewan

Manitoba

Québec

Prince
Edward
Island

Nova
Scotia

New
Brunswick

Ontario

TORONTO

United States

Atlantic Ocean



1930 – Toronto Harbour



1967 – Toronto Harbour



Today – Toronto Harbour

The Waterfront Challenge

- Create the Vision and Consensus
- Create Linkages and Remove Barriers
- Generate Enthusiasm and Great Ideas
- Continual Flow of Successful Projects
- Money, Governance, and Politics



Why Does the Toronto Waterfront Work?

- Investment by all Levels of Government and the Private Sector
- Creative Energy of the Corporation Waterfront Toronto
- Intense Utilization by Citizens and Visitors
- A High Value Location
- A Civic and Political Priority

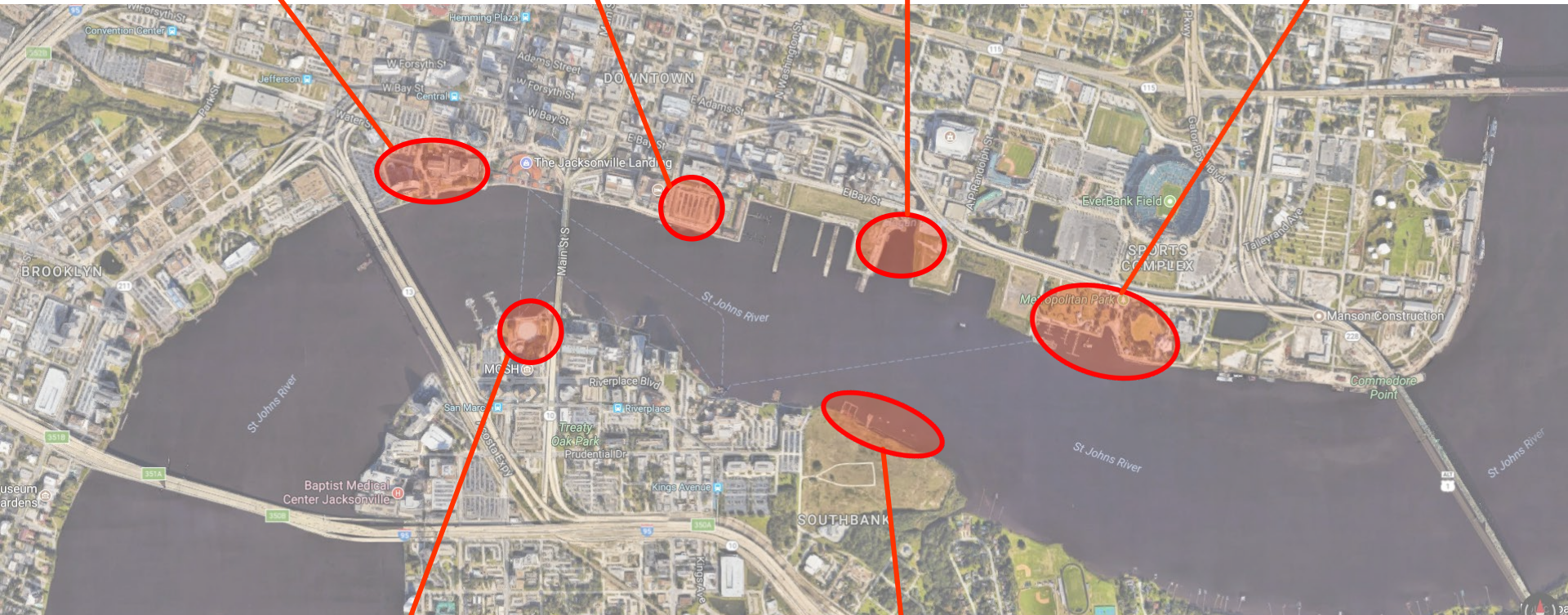


Future Performing Arts Garden

Possible Boat Basin or Public Space

Potential Future Park

Park Under Consideration for Private Redevelopment



Friendship Fountain/Park

Proposed Park Part of Private Development

Toronto Music Garden

H_TO Park

Sherbourne Common

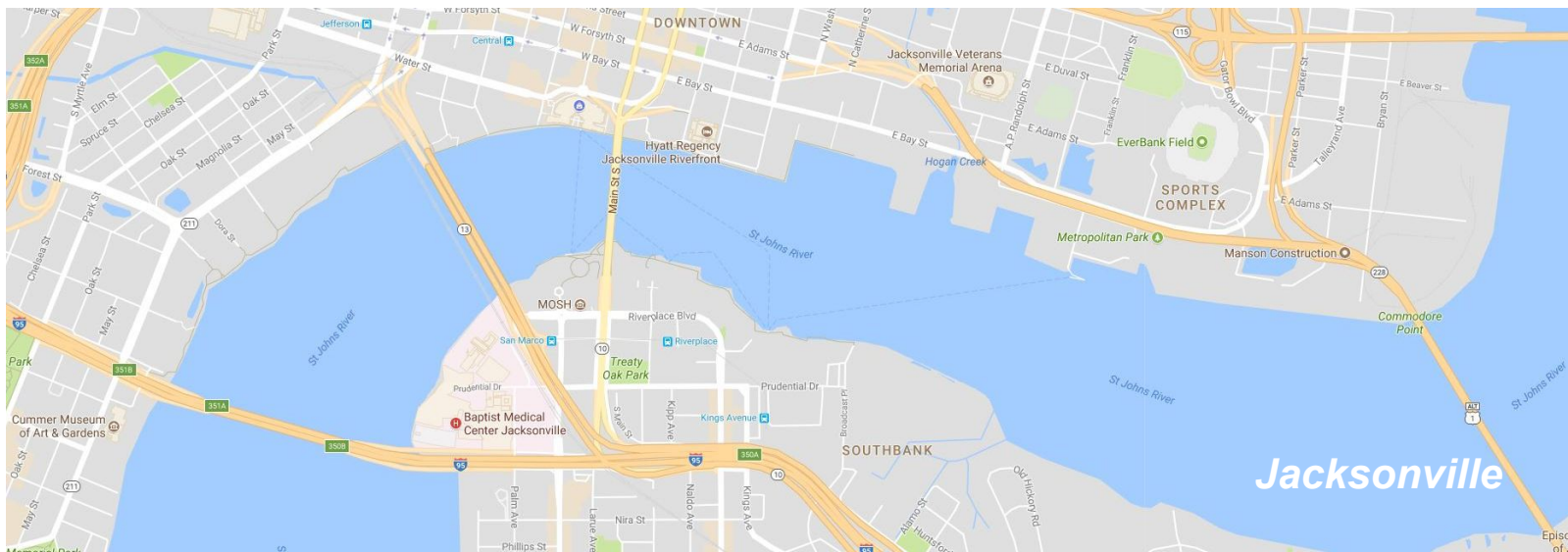
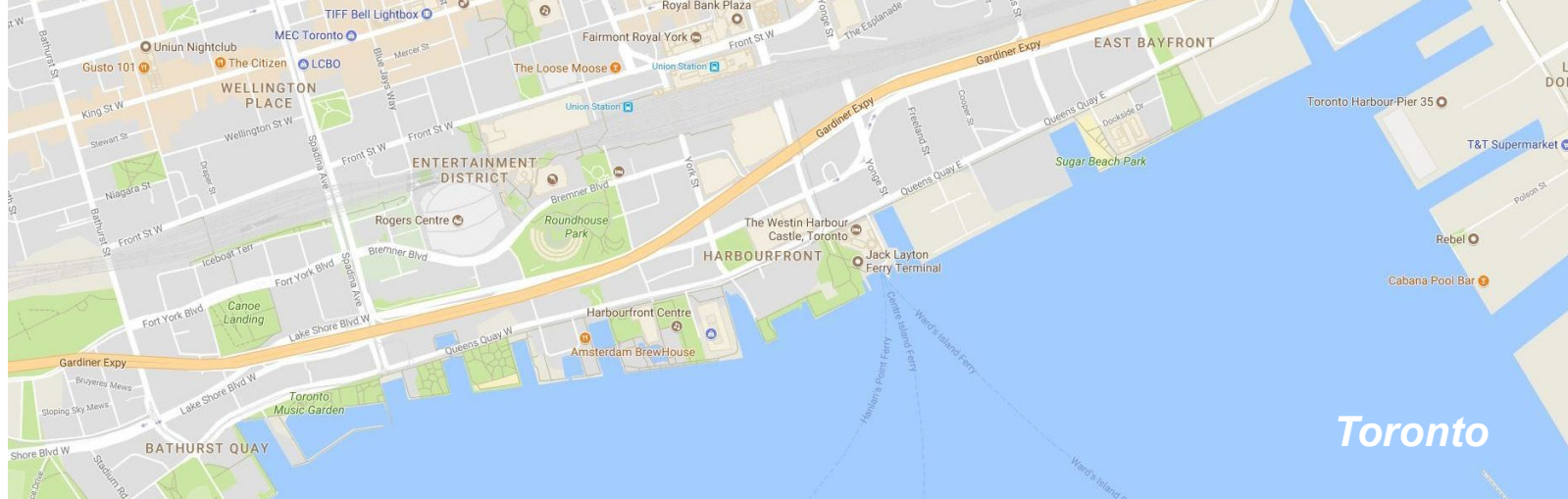


Wave decks

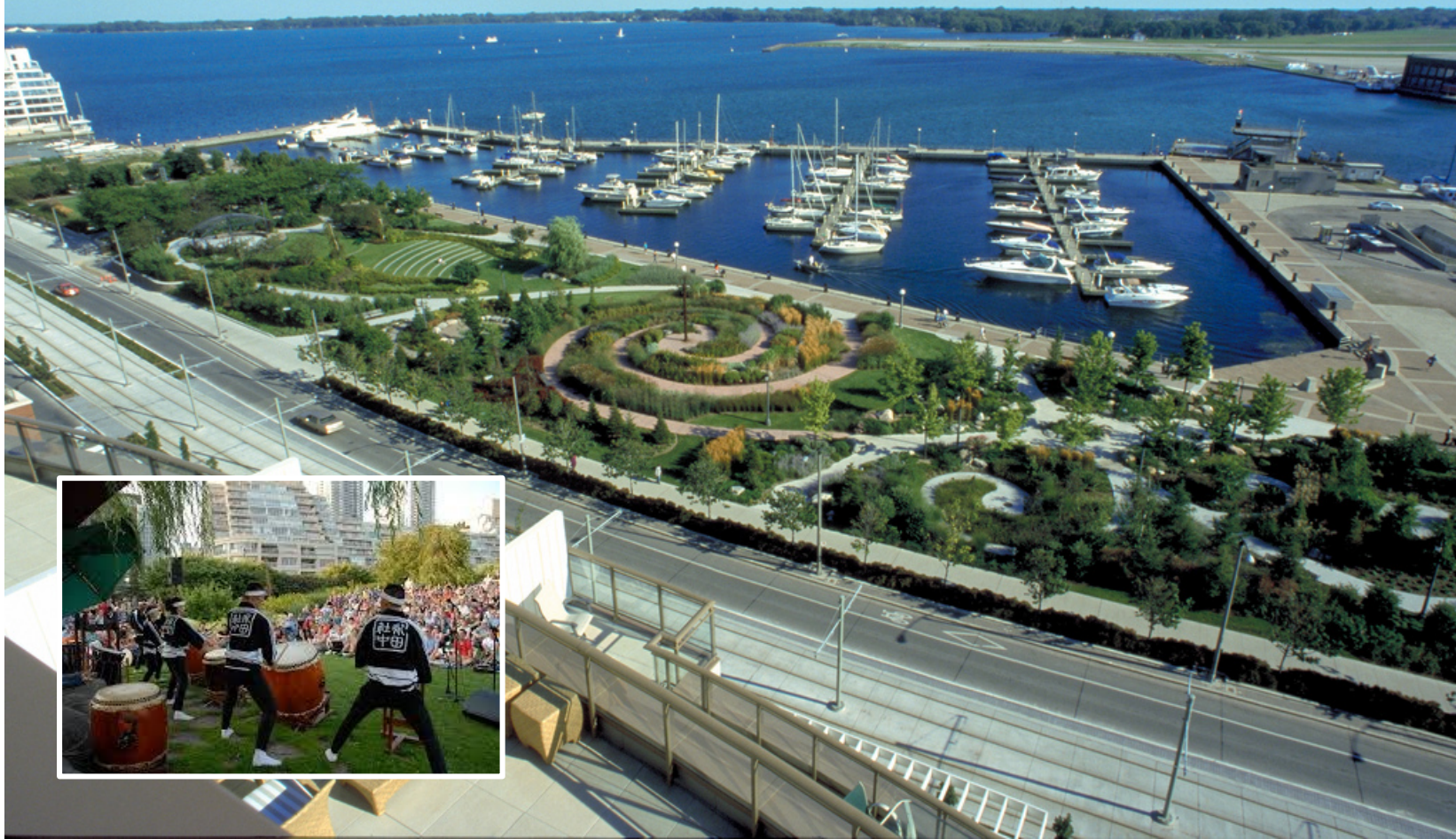
Harbourfront Centre

Canada's Sugar Beach

Toronto Waterfront Rendering of Build-out
Waterfront Toronto



Toronto Music Garden, Toronto



Simcoe Wavedeck, Toronto



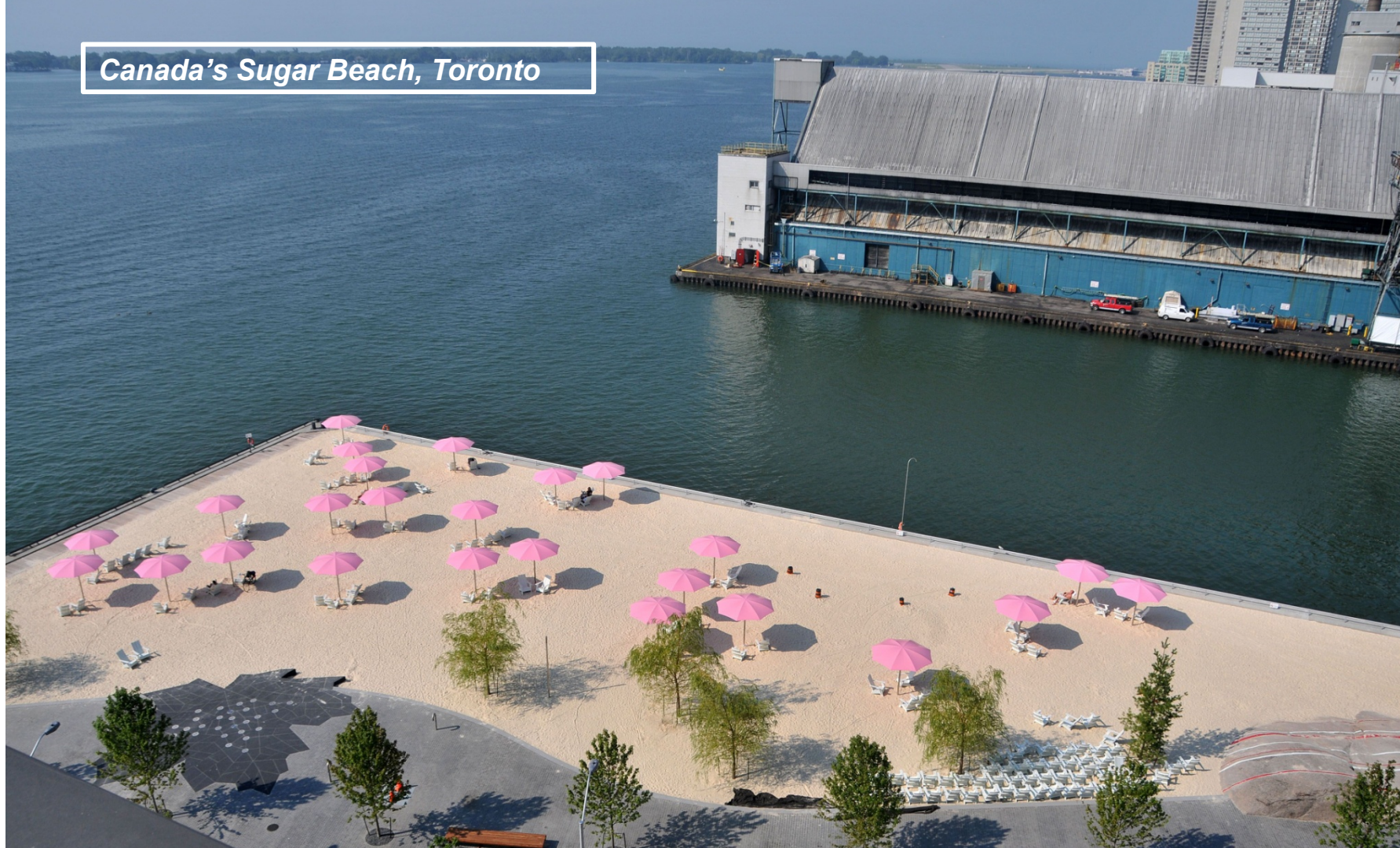
H₂O Park, Toronto



Habourfront Centre, Toronto



Canada's Sugar Beach, Toronto



Sherbourne Common, Toronto



Connections



Queens Quay Revitalization

Toronto Waterfront Rendering of Build-out
Waterfront Toronto

Queens Quay Boulevard, Toronto



Underpass Park, Toronto



The Bentway, Toronto



A wide-angle photograph of the Toronto skyline at night, viewed from across Lake Ontario. The CN Tower stands prominently on the left, illuminated with red and white lights. To its left is the Rogers Centre, glowing with blue light. The rest of the skyline is a dense collection of skyscrapers, their windows and architectural details lit up with various colors like yellow, white, and red. The lights from the city are reflected in the calm water of the lake in the foreground. The sky is a deep blue with some light clouds.

TORONTO

JAX Chamber Leadership Trip
Waterfront Activation Session
November 2017

Moderator: *CW Lori Boyer, City of Jacksonville*

Panelists: *Christina Heydorn
Lee Parsons*